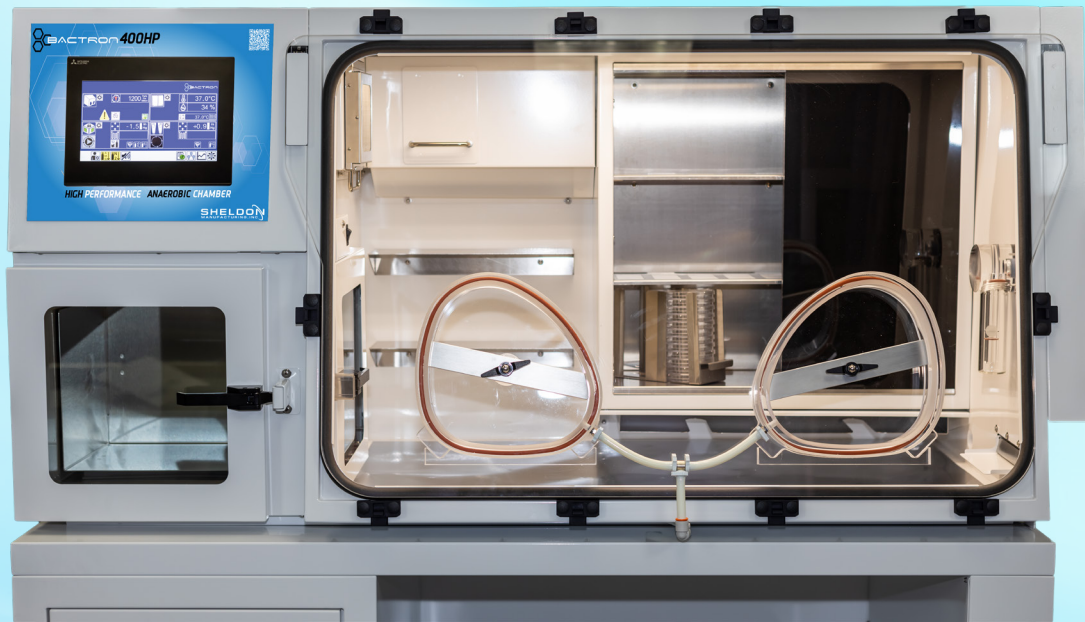


INTRODUCING OUR **NEW** 400 PLATE CAPACITY ANAEROBIC CHAMBER WITH A CAPACITIVE 10.1" TOUCHSCREEN CONTROLLER AND INNER CHAMBER **HEPA** FILTRATION SYSTEM



BACTRON 400HP
HIGH PERFORMANCE ANAEROBIC CHAMBER



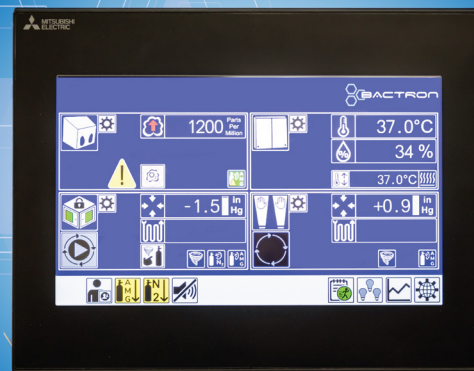
BACTRONS CREATE AN ENVIRONMENT WITH AN ABSENCE OF OXYGEN WHICH IS OBLIGATE, AND STRICT FOR YOUR ANAEROBIC ORGANISMS

Our new redesigned Bactron400HP anaerobic chamber with a spacious new 19.8 cu. ft. workspace and new inner workstation incubator allow the new BACTRON400HP to deliver more capacity without compromising the compact design for any research lab space. Researchers will have total authority over their work area with plentiful bench space and a sizable 10.1" color capacitive touchscreen controller. The instrument results are displayed on the large, easy-to-read LCD screen that can function with or without gloves. Onscreen symbols inform the user of real-time functions of working modes, alarms, and anaerobic status. Also, our engineers have upgraded the unit's inner chamber with a sizable HEPA filtration ecosystem that effectively ensures micro-particle arrest in most applications. Our BACTRON Anaerobic Chambers have an airtight construction of stainless steel and rigid acrylic glass for unobstructed vision and integrity. The chamber handcuffs form a comfortable seal around the operator's arms that enables complete manipulation of plates and specimens inside the working chamber forming a work user-friendly in most applications. When sitting undisturbed and unopened at a steady state, the BACTRON Anaerobic Chamber typically rests oxygen-free and anaerobic. Our Anaerobic Chambers meet EN61010, UL61010, and Can/CSA61010 standards.

BACTRON400HP Anaerobic Chamber Features:

- **NEW** HEPA filtration provides continuous treatment of workspace and incubator to ISO Class 3 standards.
- **NEW** O₂ sensor for the most accurate anaerobic performance.
- **NEW** Relative Humidity (RH) sensor for the incubator.
- **NEW** Hinged Front Flange for easy loading of lab devices, supplies, and appliances; provides full access to all areas of the chamber and incubator for cleaning.
- Standard KF40 Expansion Port for cable pass-through
- **NEW** 10.1 inch (26cm) Hi-Res multi-color touch screen control:
 - Users can display up to 4 simultaneous data or performance readings.
 - Complete data logging for multiple performance levels with SD card.
 - Password protected security settings.
- LED internal chamber adjustable brightness illumination. **ENERGY EFFICIENCY**
- User-programmable Airlock for up to 9 purge cycles.
- Low Gas Supply Alarm audible and visual notification via the control panel when the AMG gas supply is low.
- Auto-Sleeve Cycle no more guesswork or operator variation; automated ultra-efficient sleeve cycles with one press of the foot switch.
- Integrated Internal Regulators ensure consistent and reproducible gas delivery to all chamber processes plus protecting all the internal components from incorrect cylinder settings.
- User Adjustable Airlock Cycling customize your airlock cycle to fit your time and budget allowing operator customization.
- Auto-Commissioning Cycle the single-button auto-commissioning cycle automatically creates an anaerobic atmosphere in 6 hours; press the button and walk away while the chamber becomes anaerobic.

BACTRON 400HP



HIGH PERFORMANCE ANAEROBIC CHAMBER

SHELDON
MANUFACTURING, INC.

Applications:

- Clinical Microbiology
- Microbiome Studies
- Susceptibility Assays
- Fermentation and Spoilage Studies
- Food Microbiology
- Bio-Energy Research
- Environmental Microbiology
- Anaerobic Bacteriology

BACTRON 400HP & HP-2 BAA400HP23 & 23-E

Exterior Dimensions (w x d x h)	64.1 x 32.4 x 32.6 in 1626 x 823 x 828 mm
Workspace Chamber Dimensions (w x d x h)	42.5 x 28.9 x 25.0 in 1059 x 734 x 635 mm
Workspace Chamber Volume	19.8 cu. ft 560L
Airlock (w x d x diagonal)	16 x 10 x 11.5 in 406.4 x 254 x 292.1 mm
Airlock Volume	0.9 cu. ft 26 L
Incubator Dimensions (w x d x h)	23.6 x 8.6 x 21.9 in 599.44 x 218.44 x 556.26 mm
Incubator Volume	1.6 cu. ft. 45.3 L
Unit Weight	335 lb
Incubator Performance	
Temperature Range	Ambient + 5°C to 70°C
Temperature Uniformity	(+/-) 0.2°C @ 37°C
Incubator Capacity	400 Plates
Airlock Capacity	216 Plates



<https://www.sheldonmanufacturing.com>



sales@sheldonmfg.com



Manufactured in Cornelius, Oregon USA



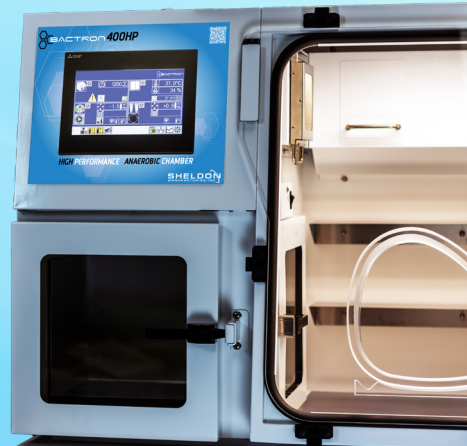
FOLLOW US ON:



SHELDON
MANUFACTURING, INC.



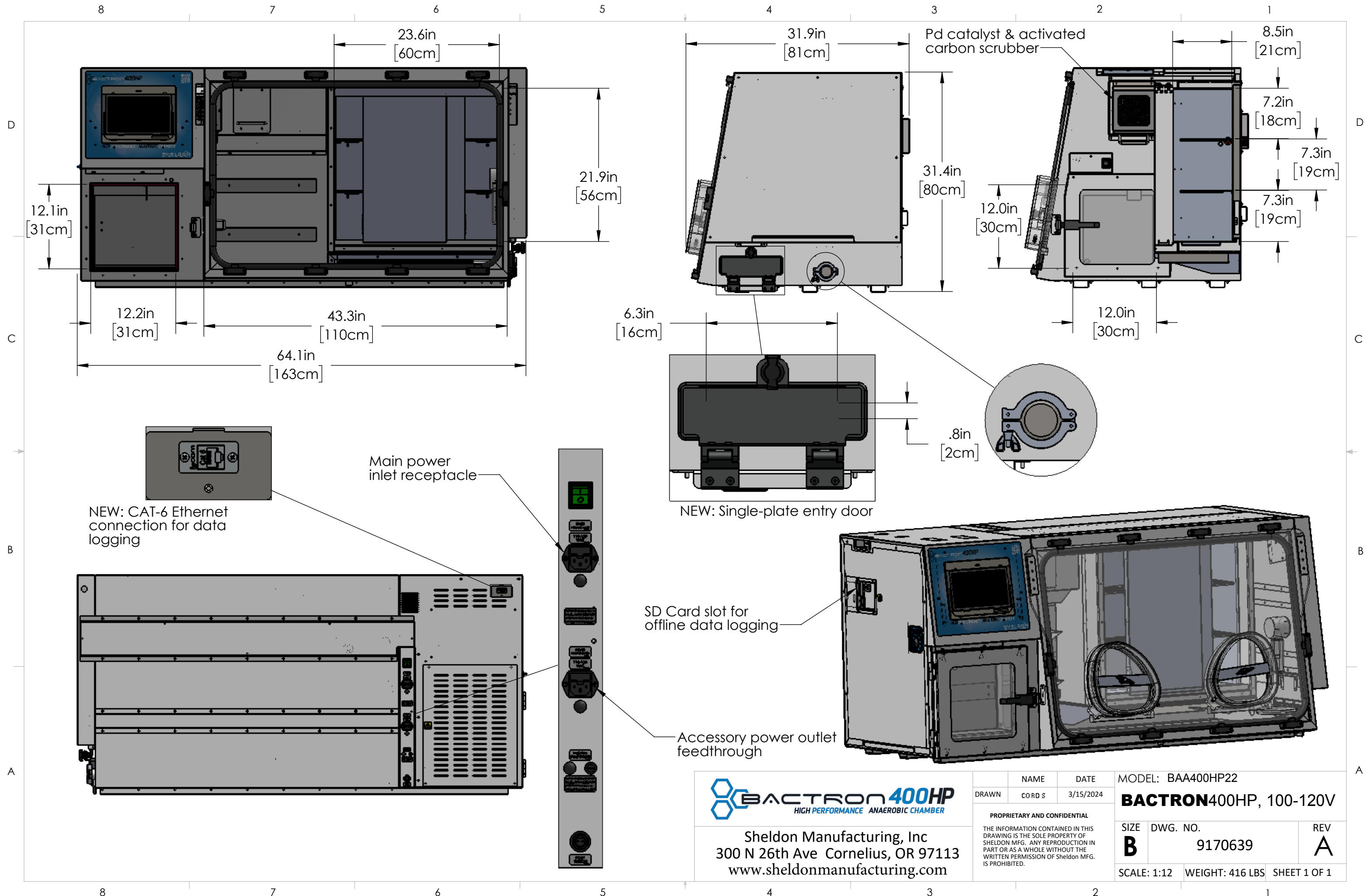
ADVANCED ANAEROBIC CHAMBERS SERIES WITH **HEPA** FILTRATION SYSTEM!



FOLLOW US ON:

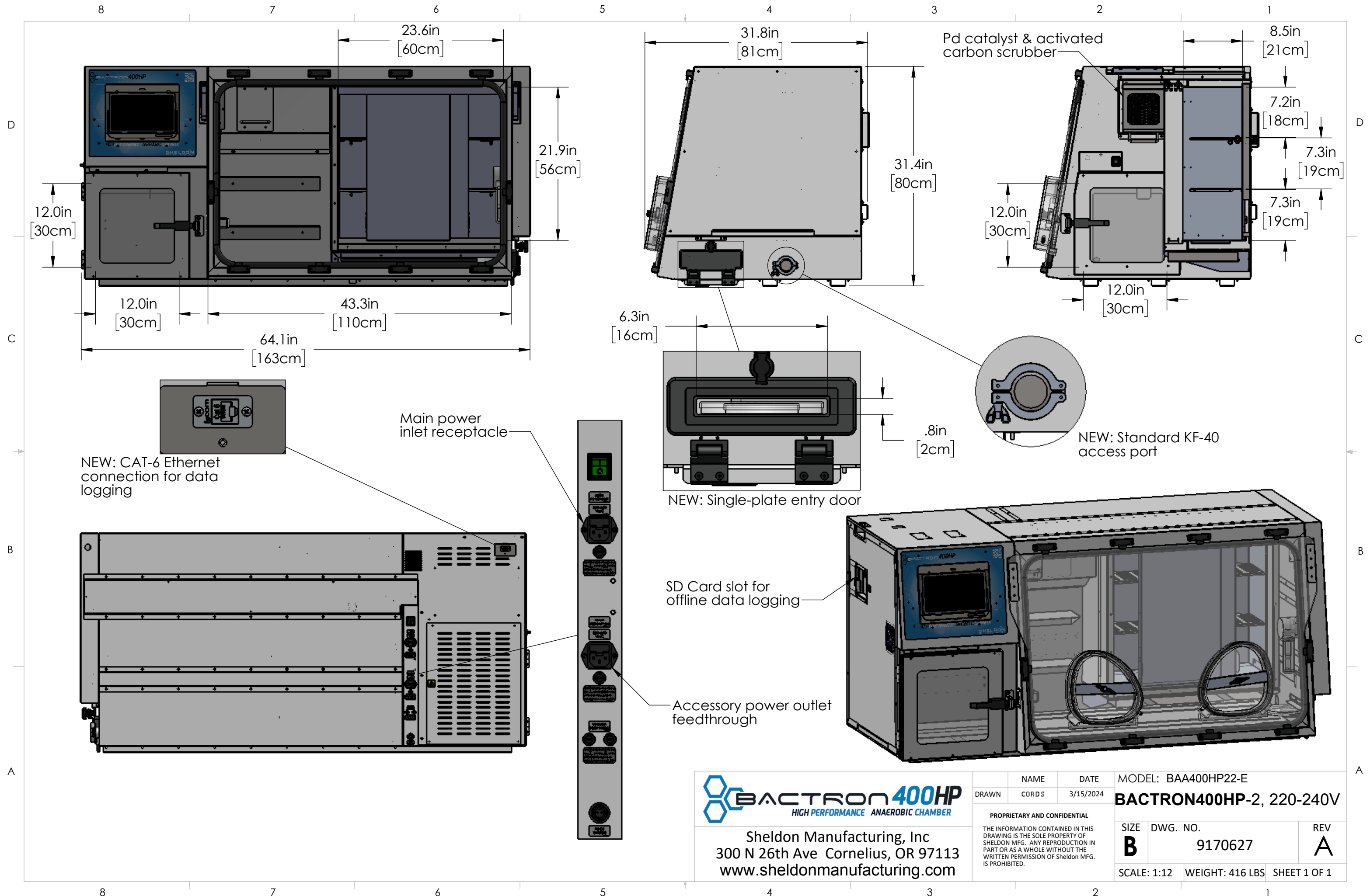


SHELDON
MANUFACTURING, INC.



Sheldon Manufacturing, Inc
300 N 26th Ave Cornelius, OR 97113
www.sheldonmanufacturing.com

	NAME	DATE	MODEL: BAA400HP22		
DRAWN	CORD S	3/15/2024	BACTRON400HP, 100-120V		
PROPRIETARY AND CONFIDENTIAL					
THE INFORMATION CONTAINED IN THIS DRAWING IS THE SOLE PROPERTY OF SHELDON MFG. ANY REPRODUCTION IN PART OR AS A WHOLE WITHOUT THE WRITTEN PERMISSION OF Sheldon MFG. IS PROHIBITED.			SIZE	DWG. NO.	REV
			B	9170639	A
			SCALE: 1:12	WEIGHT: 416 LBS	SHEET 1 OF 1



Sheldon Manufacturing, Inc
300 N 26th Ave Cornelius, OR 97113
www.sheldonmanufacturing.com

	NAME	DATE	MODEL: BAA400HP22-E		
DRAWN	CORDS	3/15/2024	BACTRON400HP-2, 220-240V		
PROPRIETARY AND CONFIDENTIAL					
THE INFORMATION CONTAINED IN THIS DRAWING IS THE SOLE PROPERTY OF SHELTON MFG. ANY REPRODUCTION IN PART OR AS A WHOLE WITHOUT THE WRITTEN PERMISSION OF SHELTON MFG. IS PROHIBITED.			SIZE	DWG. NO.	REV
			B	9170627	A
			SCALE: 1:12		WEIGHT: 416 LBS